





# WELCOME

## Welcome to Hitherfield Primary School and Children's Centre.

Whether it is the friendly welcome you receive when you walk into school or seeing the many families using our grounds after school to play and meet others, as soon as you walk through the gates you will feel part of our community.

We believe education is a partnership between the school, the child and their

family. Hitherfield has served the local area since the 19th Century and continues to do so with our modern, well-resourced school buildings in stunning grounds; including three playgrounds, a field, trim trail, nature area, edible playground and a ball court.

Our pupils make outstanding progress academically, physically and socially, achieving consistently well above national progress and national averages. We are a

'Lead Food Flagship School for Lambeth' and we share our expertise with other London schools. We have won many awards including the Inclusion and Arts Quality Marks, and we have won local and national competitions: the London-wide Robo Challenge; local Athletics Championships; local football leagues, as well as being finalists in the national Microsoft Challenge and winning the Lambeth Maths Olympiad ■



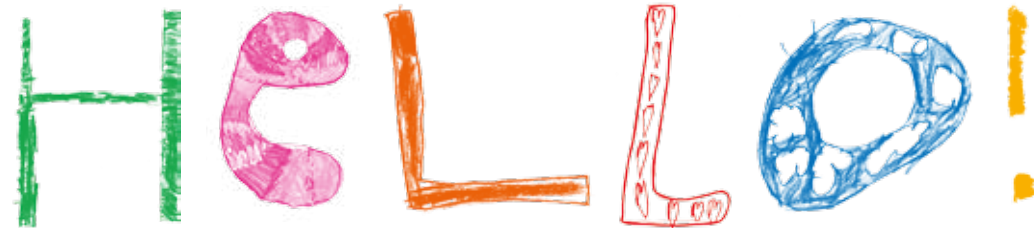
Our vision is to create a school community where everyone feels valued, has the opportunity to explore, develop their strengths and participate in new experiences.

Our aim is to be an inspirational school to create good citizens for the future in an atmosphere that promotes confidence, high academic achievement, physical health and emotional well being.

Portrait of Chris, our Headteacher, by Ayman







**Our six values flow through each and every year group.** We hold these values close to us and we embed them in to everything we do here at Hitherfield.



### Determination in Year 2

The school is determined that every child masters the basics of reading, writing and maths.



## Determination

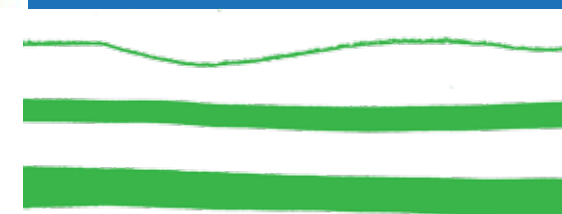
### Determination in Year 5

Children take greater responsibility for their learning and are determined to achieve and meet their goals.



### Respect in Year 3

Children continue to learn about respecting the differences of every individual in the school. They celebrate the diversity of our school community.



### Respect in Year 6

We prepare the children for the changes they will experience in life, making sure they leave the school as responsible citizens.



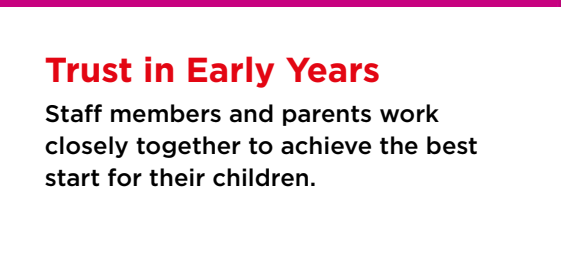
### Excellence in Year 1

Children continue to learn, actively developing their basic skills.



### Excellence in Year 4

The range of experiences on the school site and beyond equip the children with the skills and knowledge to succeed.



## Trust



### Trust in year 2

Children become more independent and begin to understand their place in the world.



### Trust in Year 5

Through the School Council, Eco Council and School Houses, pupils relish in the additional responsibilities and decision making powers they have.



### Exploring in Early Years

Children have the freedom to explore and learn in an enabling environment.



### Exploring in Year 3

Children develop a deeper understanding of the relationship between school, home and the world beyond.



## Explore



### Unity in Year 1

Children are supported to enable them to adapt to the challenges of Key Stage 1.



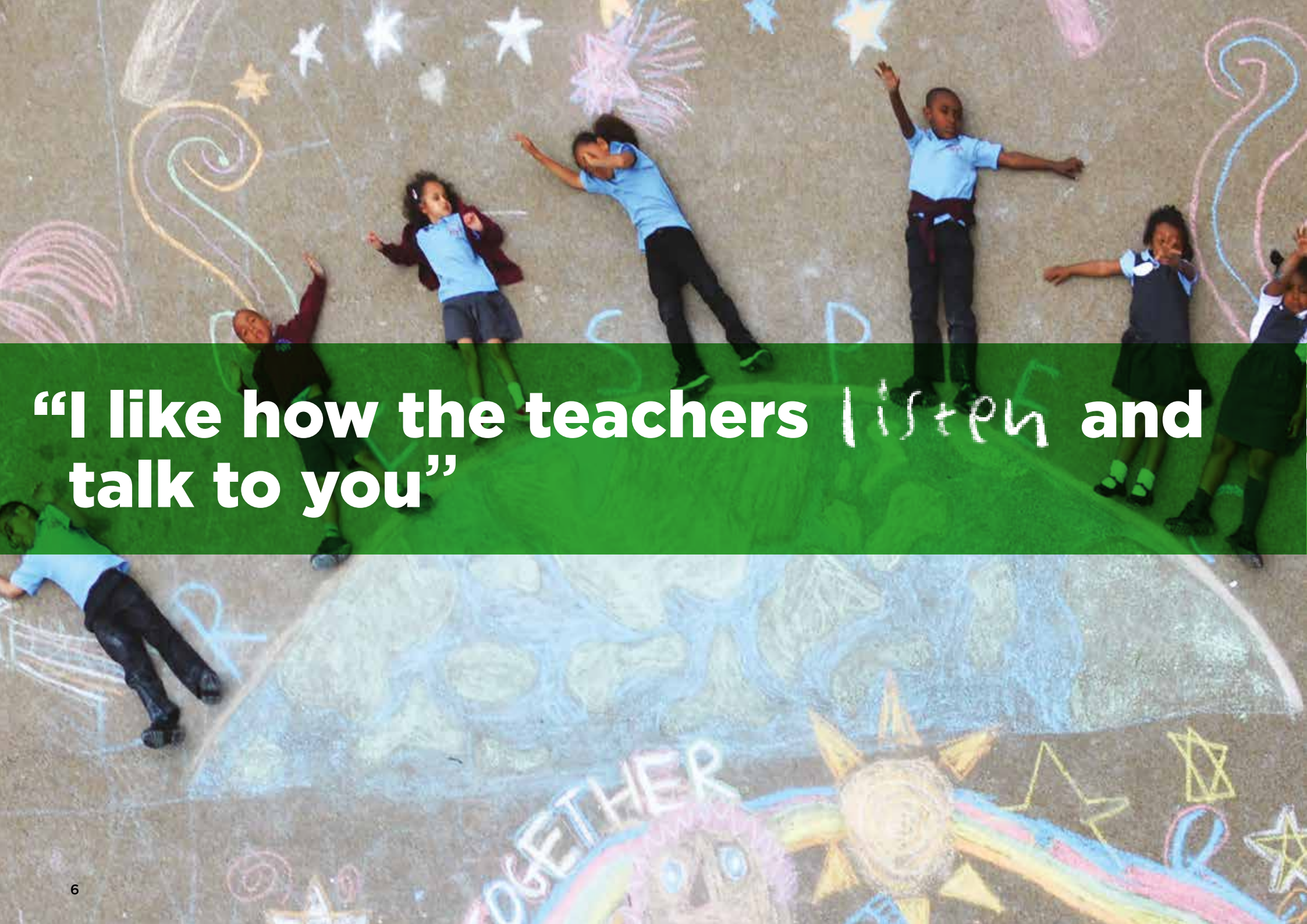
## Unity

### Unity in Year 4

The school's curriculum and listening ear supports the children in developing their self-esteem as they negotiate every day challenges.







“I like how the teachers listen and talk to you”

## Respect

We have built a community with positive relationships based upon mutual respect and support. All staff are called by their first name; we believe that you earn respect through your actions and not through a title. We are proud of our cultural diversity, seeing it as an opportunity for our children to learn about tolerance and the respect for British values and the beliefs and feelings of other people. ■

► Every parent joins the Friends of Hitherfield (PTA) and becomes an integral part of the school community. Home visits allow us to create strong links with families and gives us a deeper understanding of every child and their background. For details of our admissions arrangements see: [www.hitherfield.co.uk](http://www.hitherfield.co.uk) ■

- members of society. All children are expected to follow the school rules:
- **Do be gentle** – Do not hurt anybody
- **Do be kind and helpful** – Do not hurt people’s feelings
- **Do work hard** – Do not waste your or other people’s time

## Respect

We are a caring, inclusive school and aim for everybody to feel valued and respected



## Home & school

We pride ourselves on relationships between staff, children and parents. Learning starts at home, and we provide a culture of support which enables all staff and parents to communicate in an open and honest way ■

## School admissions

As soon as a child joins us, their family becomes part of the Hitherfield family. We commit ourselves to supporting, developing and nurturing every child. ►

## An attitude for learning

We have high expectations of our children, encouraging them to always do their best regardless of gender, ethnicity, additional needs or beliefs. We are committed to educating in a holistic way, focusing on social, moral, creative and artistic factors as well as academic. We help children to understand the importance of taking responsibility for themselves, their actions and their learning. We encourage them to be independent learners and active ►

- **Do look after property** – Do not waste or damage things
- **Do listen to people** – Do not interrupt
- **Do be honest** – Do not cover up the truth

All children become house team members earning house points which enables us to celebrate achievements and hard work on a weekly and termly basis ■

## Personal, health, social & citizenship skills

Our comprehensive PSHCE programme runs throughout the school; empowering all children to make and communicate decisions that will keep them safe and healthy. They can use these skills continually and build on them as they grow. This will help them to become successful adults, positively managing their lives and responsibilities ■





**“Good, better, best!”**

## Achievement

Our children make outstanding progress and their levels of attainment are regularly above National Averages.

We ensure that children know what excellence looks like; enabling them to identify goals and strive for them. We take care to find out how every child is progressing throughout the year; ensuring that children who need it are given extra support and challenge.

We know that our children reach their academic potential, no matter what their needs ■

► after school clubs offering a range of activities. Our partnership with the Lambeth Music Service means that all children learn a musical instrument. We also have partnerships with schools in Paris and Tanzania providing opportunities to encourage children to develop their language skills and understanding of global issues.

Children also get the chance to showcase their skills: singing and playing instruments at the Royal Festival Hall, showing off their maths



## The curriculum

We believe that all children should have experiences that broaden their engagement with and understanding of the world...and we don't leave this to chance. Based in one of the world's most exciting cities we use London to provide great contexts for learning.

Each term, all children are given the opportunity to participate in an off-site visit or to take part in workshops here at school with activities that broaden their experience and understanding.

All staff contribute to the learning experience and many show a great commitment to this by running ►



and general knowledge, engaging in dance, art, sports and computing in local and London-wide competitions ■



## Excellence

**We all strive for excellence here at Hitherfield!**







**“Games work better when  
you’re working *together*”**

## Diversity

Our community may have settled in London but many of them have ties elsewhere. The Hitherfield experience encompasses influences from all around the world because we know that when children have a strong sense of their identity, they have a strong sense of self. This helps them grow into rounded members of society.

At Hitherfield, we learn to interact positively with the diverse population that is London; helping us to support our community and to understand our connection with the wider world whilst embedding British values ■

## Inclusion

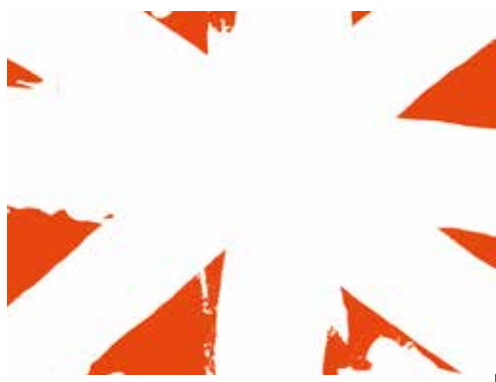
Sometimes children need additional support to meet their potential. Our skilled SEND team work closely with parents, staff and agencies to ensure that needs are met. Our Learning Mentors work with children to support their social and emotional wellbeing. This can be 1:1, small group work or support with a particular subject in class. They also support parents through programmes such as ‘Strengthening Families, Strengthening Communities’ helping them with support outside of school.

Alongside our in-house provision we employ play, speech and language therapists when special support is necessary. For more information see: [www.hitherfield.co.uk](http://www.hitherfield.co.uk).

We celebrate that our children come from a wide range of cultures and backgrounds. Sometimes children are learning English as their second ►

► language. In this case, children will receive class and small group support helping them with their use of English. If children arrive with no spoken English, they receive a comprehensive learning package to ensure that they have the basic language skills to feel safe and happy in their new school.

Throughout school children with additional needs are closely supported ensuring that they fulfil their potential ■



## Local partnerships

Hitherfield works in collaboration with nine Streatham schools in the South Lambeth School’s Partnership to offer ‘out of school services’ to our families including holiday clubs, the Children’s University, staff professional development and challenge and procurement. All schools are committed to ensure the best educational experiences for all our children ■

## Children’s Centre

Our Children’s Centre specialises in bringing together support for all families with children under 5. Offering families space to play and learn, opportunities to meet other families, gain advice around caring for babies and young children, along with developing skills commonly needed in the workplace.

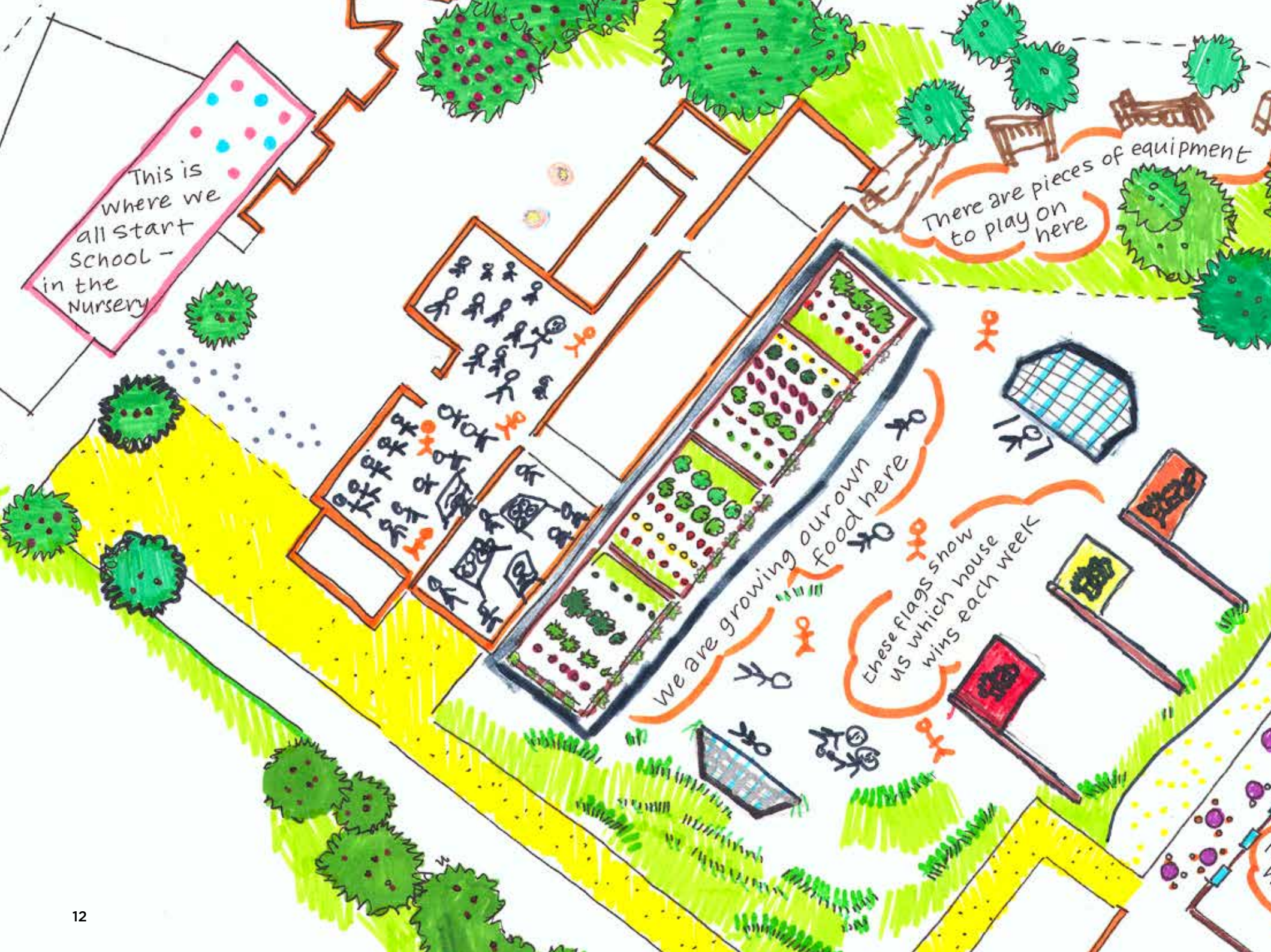
We understand that some parents find parenthood takes some getting used to. We help by putting these parents in touch with the organisations that have the knowledge and skills to support them ■

## Unity

**The Hitherfield  
community is a  
united community!**







## Explore our school

Right hand page  
The school building and playground.

Left hand page  
The school grounds, Children's centre and nursery in detail.







**“I’m always *learning* from my mistakes and never give up”**

### The value of determination

Doing their best for themselves, setting goals and having high aspirations are all part of the journey to becoming a good citizen. By the time that children leave Hitherfield they are ready for the challenges that they will face when moving on to secondary school and beyond.

As well as our broad and balanced curriculum, we support children with their extra-curricular interests

### Our Governors

Our staff and Board of Governors work closely together ensuring the school challenges itself to improve. This successful partnership was acknowledged in the school’s latest Ofsted Inspection where leadership was graded outstanding ■

## Determination

At Hitherfield we instill the value of determination through everything our children do

and talents. Children at Hitherfield have opportunities to develop determination in a range of ways outside the classroom. This may be through representing the school in competitive sports and academic competitions such as the Maths Olympiad, raising money or awareness for various charitable organisations ■

**‘The headteacher, leaders, managers and the governing body work exceptionally closely together with staff and form an ambitious and cohesive unit. Pupils, and their families, are outstandingly well supported by the school.’**

Ofsted Report April 2013







**“I treat everybody at Hitherfield  
as part of my family”**

## Children

We trust Hitherfield children to help us make the decisions that shape our school and make it the way that they want it to be.

Children from Year 1 to 6 engage with the democratic process to elect representatives onto our School Council. Each class electing one School Councillor and up to 5 School Councillors are co-opted based on the skills they can bring to the group.

Children who make up the School Council are an important part of

► busy families.  
When families are struggling, they can trust us to be there; ensuring they can get the help they need from our team or the agencies best placed to support them.

We trust our families to work with us to educate their children, and we run programmes such as Families and Schools Together (FAST) that

► and protection of children ensures that they are able to trust the people they meet at school. Our policies can be seen at: [www.hitherfield.co.uk](http://www.hitherfield.co.uk) ■



## Trust



**At Hitherfield we know that if we place our trust in others, we can achieve even more than we can by ourselves**

our leadership team. We trust them to represent the views of all Hitherfield children ■

## Families

Families trust us to help them in a variety of ways: providing care for their children before and after school with our Breakfast and After School Clubs, keeping them occupied during the holidays with our Summer Holiday Play Schemes or simply getting them to school on time with our walking bus; just some of the ways we help ►

help build our learning community. Our Home Learning Policy relies on parents and carers joining in learning activities with their children and the Children's Centre provides opportunities for those who want to learn even more.

We are trusted by our families to ensure that Hitherfield children are safe and feel well looked after throughout the school day. Our Learning Mentors help support children in building and maintaining good relationships with others, our strong commitment to the safety ►







**“We have the *freedom* to find things out for ourselves”**

### Indoors & outdoors

We make the most of our indoor and outdoor spaces as well as the local area; enabling children to engage with each other and the world around them in ways that help them to grow and become independent people.

Our exciting spaces encourage children to interact with their environment and to take measured risks; building a real sense of what their bodies and minds are capable of and an appreciation of how their surroundings change throughout

the year. Children from Nursery to Year 6 make the most of their time in our classrooms, library, nature area, trim trail, woodland trail, field and games areas playing with with friends creating their own imaginary worlds; exploring, finding natural materials for their games and developing positive relationships along the way ■

### Edible playground

Hitherfield is a Lambeth Food Flagship School, encouraging children to understand and value food by learning from our Edible Playground; sowing, growing, harvesting and using the raw produce to produce tasty dishes! ■



## Explore

People have a natural inclination to explore and we aim to take full advantage of this at Hitherfield!





# Hitherfield Primary School and Children's Centre

Leigham Vale, Streatham, London, SW16 2QJ

Headteacher: Christopher Ashley-Jones

Deputy Headteacher: Jacinta Waters

020 8769 8428

[admin@hitherfield.lambeth.sch.uk](mailto:admin@hitherfield.lambeth.sch.uk)

[www.hitherfield.co.uk](http://www.hitherfield.co.uk)

Or pop in to the main school office at the  
Leigham Vale entrance

