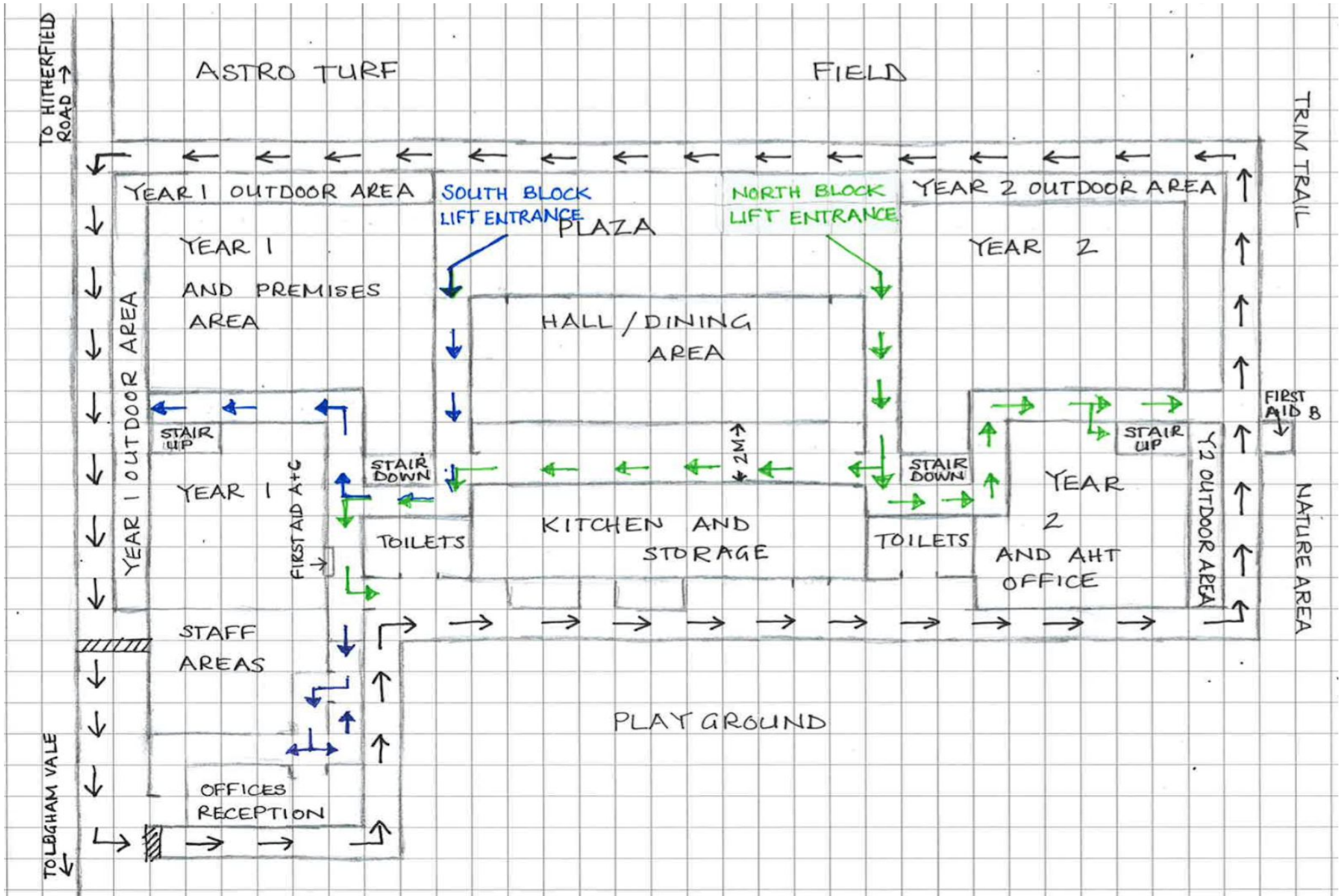


# Specific Guidance Document: Moving Around the School



## Specific Guidance Document: Moving Around the School

**Moving around the school with children:** Adults must follow the one way system at all times when moving around *inside and outside* the school with children.

**Moving around the school without children:** Adults moving around *outside* without children do not need to follow the external one-way system. Adults must follow the *inside* one-way system at all times, even when moving without children.

**Premises team:** PT do not have to follow the one way system on the ground floor when moving around the school but must observe social distancing measures. The one way system for the stairs must be observed at all times by all users.

**Exceptions at the start and end of the day:** specific exceptions to the one way system for the start and end of the day will be communicated to individual year group bubbles by the relevant AHT. e.g. Year 1 entering classrooms from Leigham Vale at the start of day.